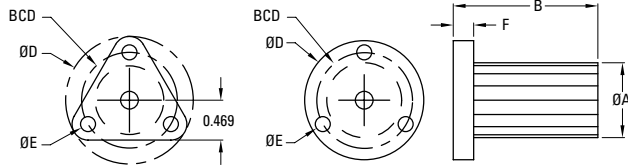


## Flange Mount Supernuts®

### MTS



**MTS 3/8" (10 mm)  
Only**

**MTS 3/16" to 5/16"**

#### Integral Flange Mount

The MTS models provide the excellent lubricity and dimensional stability of our proprietary Acetal with the convenience of an integral flange.

#### MTS - 3/16" to 3/8" (10 mm) Diameter

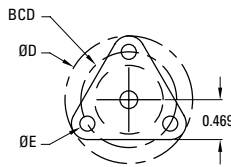
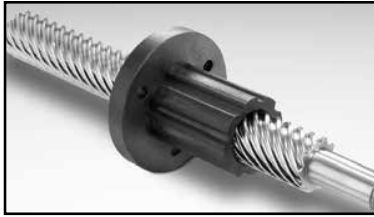
Dia.	Lead	Part No.	Supernut® Dimensions						Design Load	Efficiency %	Drag Torque oz-in
			A	B	D	E	F	BCD			
3/16"	0.050	MTS1820	0.50	0.75	1.00	0.14	0.15	0.75	10 lbs	49	Free Wheeling
	0.100	MTS2-1820								66	
	0.125	MTS3-1824								70	
	0.200	MTS4-1820								77	
	0.375	MTS8-1821								81	
	0.400	MTS8-1820								82	
	0.500	MTS10-1820								82	
6mm	1 mm	MTS6x1M	0.50	0.75	1.00	0.14	0.15	0.75	10 lbs	37	Free Wheeling
1/4"	0.031	MTS2532	0.50	0.75	1.00	0.14	0.15	0.75	25 lbs	30	Free Wheeling
	0.050	MTS2520								41	
	0.063	MTS2516								48	
	2 mm	MTS2-25x1M								53	
	3 mm	MTS3-25x1M								62	
	0.125	MTS2-2516								64	
	0.200	MTS4-2520								72	
	0.250	MTS4-2516								76	
	0.500	MTS7-2514								81	
	0.750	MTS12-2516								82	
5/16"	0.083	MTS3112	0.50	0.75	1.00	0.14	0.15	0.75	50 lbs	49	Free Wheeling
	0.167	MTS2-3112								65	
	0.250	MTS2-3108								72	
	0.500	MTS4-3108								80	
	1.000	MTS8-3108								81	
3/8"*	0.050	MTS3720	0.71	1.50	1.5	0.20	0.20	1.125	60 lbs	32	Free Wheeling
	0.063	MTS3716								36	
	2mm	MTS37x2M								42	
	0.083	MTS3712								44	
	0.100	MTS3710								49	
	0.125	MTS3708								53	
	0.167	MTS2-3712								60	
	0.200	MTS2-3710								65	
	0.250	MTS2-3708								68	
	0.300	MTS3-3710								73	
	0.375	MTS4-3711								75	
	0.500	MTS4-3708								79	
	0.750	MTS6-3708								82	
	1.000	MTS5-3705								82	
	1.200	MTS5-3704								82	
10 mm*	2 mm	MTS10x2M	0.71	1.50	1.5	0.2	0.200	1.125	75 lbs	41	Free Wheeling
	3 mm	MTS10x3M								53	
	4 mm	MTS2-10x2M								59	
	5 mm	MTS2-10x2.5M								64	
	6 mm	MTS4-10x1.5M								67	
	10 mm	MTS5-10x2M								76	
	12 mm	MTS5-10x2.4M								78	
	20 mm	MTS6-10x3.3M								81	

\* 3/8" and 10mm with tri-flange

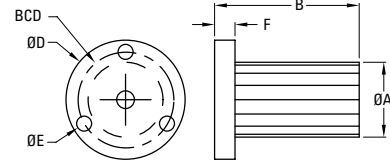


## Flange Mount Supernuts®

### MTS



MTS 7/16" Only



MTS 12 mm to 5/8" (16 mm)

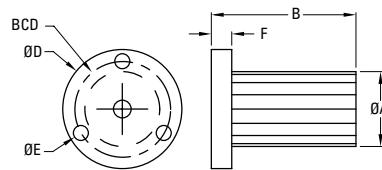
### MTS 7/16" to 5/8" (16 mm) Diameter

Dia.	Lead	Part No.	Supernut® Dimensions						Design Load	Efficiency %	Drag Torque oz-in
			A	B	D	E	F	BCD			
7/16"*	0.125	MTS2-4316	0.71	1.50	1.5	0.20	0.200	1.125	75 lbs	55	Free Wheeling
	0.250	MTS2-4308								65	
	0.500	MTS4-4308								76	
12mm	3 mm	MTS12x3M	0.75	1.50	1.5	0.20	0.250	1.125	125 lbs	48	Free Wheeling
	4 mm	MTS2-12x2M								54	
	5 mm	MTS2-12x2.5M								59	
	6 mm	MTS3-12x2M								63	
	10 mm	MTS4-12x2.5M								73	
	15 mm	MTS6-12x2.5M								78	
	25 mm	MTS10-12x2.5M								82	
1/2"	0.0625	MTS5016	0.75	1.50	1.5	0.20	0.250	1.125	125 lbs	30	Free Wheeling
	0.100	MTS5010								41	
	4mm	MTS2-50x2M								52	
	0.200	MTS2-5010								57	
	0.250	MTS2-5008								62	
	0.500	MTS4-5008								75	
	0.800	MTS8-5010								80	
	1.000	MTS8-5008								81	
1.500	MTS12-5008	82									
5/8"	0.100	MTS6210	0.88	1.63	1.5	0.20	0.300	1.188	175 lbs	35	Free Wheeling
	0.125	MTS6208								40	
	0.200	MTS2-6210								51	
	0.250	MTS2-6208								57	
	0.500	MTS4-6208								71	
16 mm	4 mm	MTS16x4M	0.88	1.63	1.5	0.20	0.300	1.188	175 lbs	47	Free Wheeling
	5 mm	MTS2-16x2.5M								52	
	8 mm	MTS4-16x2M								63	
	16 mm	MTS7-16x2.3M								75	
	25 mm	MTS5-16x5M								80	
	35 mm	MTS7-16x5M								82	

\* 7/16" with tri-flange

### Flange Mount Supernuts®

MTS



MTS 3/4" (20 mm)

MTS  
3/4" (20 mm) Diameter

Dia.	Lead	Part No.	Supernut® Dimensions						Design Load	Efficiency %	Drag Torque oz-in
			A	B	D	E	F	BCD			
3/4"	0.100	MTS7510	1.125	1.75	2.0	0.20	0.300	1.438	275 lbs	31	Free Wheeling
	0.125	MTS7508								36	
	0.167	MTS7506								44	
	0.200	MTS7505								49	
	0.500	MTS5-7510								69	
	1.000	MTS8-7508								79	
	1.500	MTS12-7508								81	
	2.000	MTS10-7505								82	
20 mm	4 mm	MTS20x4M	1.125	1.75	2.0	0.20	0.300	1.438	275 lbs	42	Free Wheeling
	8 mm	MTS2-20x4M								59	
	12 mm	MTS3-20x4M								67	
	16 mm	MTS4-20x4M								72	
	20 mm	MTS5-20x4M								76	
	45 mm	MTS9-20x5M								82	
	50 mm	MTS10-20x5M								82	